

What Star Is This, with Beams So Bright 152

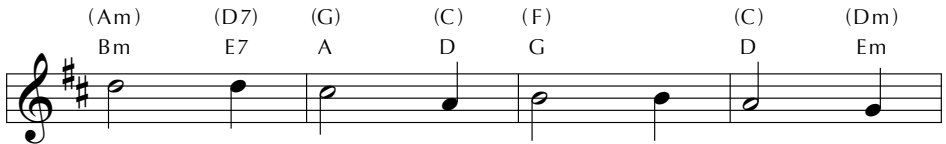
Capo 2: (C) (Am) (G) (C) (F) (C) (G) (C) (F)
 D Bm A D G D A D G



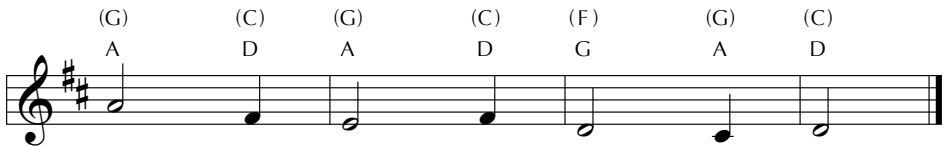
1 What star is this, with beams so bright, more
 2 'Tis now full-filled what God de-creed, "From
 3 While out-ward signs the star dis-plays, an
 4 O Je-sus, while the star of grace im-



love-ly than the noon-day light? 'Tis
 Ja-cob shall a star pro-ceed;" and
 in-ward light the Lord con-veys and
 pels us on to seek your face, let



sent to an-nounce a new-born king, glad
 lo! the east-ern sa-ges stand to
 urg-es them, with ten-der might, to
 not our sloth-ful hearts re-fuse the



ti-dings of our God to bring.
 read in heaven the Lord's com-mand.
 seek the giv-er of the light.
 guid-ance of your light to use.

This 18th-century Latin text calls attention to three kinds of light: the light of the star leading the Magi to the Christ-child, the inward light inspiring their journey, and Christ who is the Light of the world. The simple unison melody unites everything in a gentle arc.